



GROUP SCOUT LEADER: TIM SHAW

21 Falmouth Drive, Amington, Tamworth, Staffs, B77 3QJ

TEL: 0845 224 3085 **MOBILE:** 07837 430204

EMAIL: gsl5th@btinternet.com

www.5thsuttoneast.co.uk

5TH SUTTON COLDFIELD EAST SCOUT GROUP

(172ND BIRMINGHAM, FOUR OAKS METHODIST)

WELCOME PACK



(FOR NEW & EXISTING MEMBERS)





GROUP SCOUT LEADER: TIM SHAW

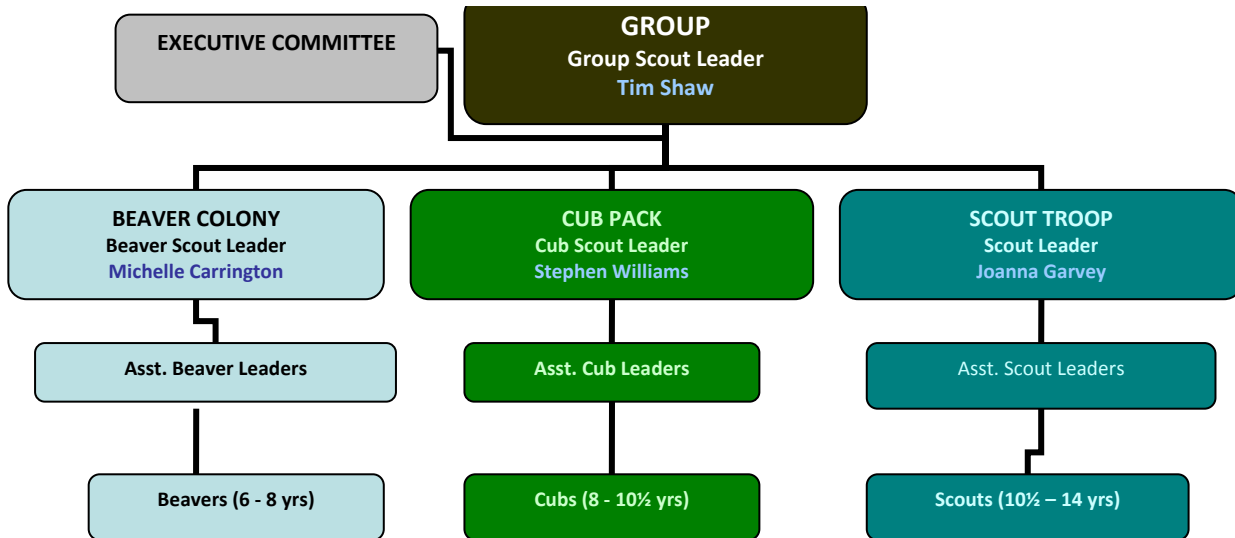
21 Falmouth Drive, Amington, Tamworth, Staffs, B77 3QJ

TEL: 0845 224 3085 MOBILE: 07837 430204

EMAIL: gsl5th@btinternet.com

www.5thsuttoneast.co.uk

Welcome to the Family of Scouting!!



The following pages will provide you with information that you need to get started as an important part of 5th Sutton Coldfield East Scout Group. Hopefully, the chart above will help show how the pieces of the Scout Group jig-saw fit together. Now that your son / daughter is a member of the Group, you are voting members of the Scout Group Council to whom the leaders and Executive are accountable and we report back to at our Annual General Meeting.

Although we have a relatively young team, there is a wealth of experience within the leadership, which means that we can offer your child an enthusiastic and fun-packed programme to make him/her an all-round better person. If you have any questions then please do not hesitate to contact either me or any of the leaders listed in this Welcome Pack and we will always do our best to help you.

Leaders and helpers are always needed and if you can give up a small amount of time, please indicate this on the questionnaire that you return to your Section Leader. Alternatively, if working on the business side of the Group appeals more, along with networking and contact with the other parents of a particular section, you are ideally suited for the Executive Committee. The Committee is looking for parent representatives for each of the Sections, as well as *ex-officio* members – Group Secretary currently.

The membership subscription is currently £65.00 per year or £37.50 per half year. Our Group's Financial year runs from April 1st to March 31st each year. Our Group Treasurer is responsible for collecting in all membership subscriptions and, as the Scout Association is a registered charity, will claim Gift Aid where appropriate too. We accept cash, cheques and, more recently, standing order and internet payments too! For those of you with more than one child in the Scout Group at any one time, we have a Sibling Discount scheme in place that gives a discount of £5 per annum for the second and subsequent child concurrently in the Group.

The membership subscriptions pay the Scout Association for the capitation and insurance of each child and adult within the Group, as well as the weekly activities and badges provided free of charge to your son/daughter on an ongoing basis. If you have any questions on membership subscriptions, then please do not hesitate to contact the Group Treasurer, Clive Hawtin on 0121 308 2032

Welcome to the Family of Scouting here at Four Oaks!

Yours in Scouting,

Tim Shaw
Group Scout Leader

September 2009



GROUP SCOUT LEADER: TIM SHAW

21 Falmouth Drive, Amington, Tamworth, Staffs, B77 3QJ

TEL: 0845 224 3085 **MOBILE:** 07837 430204

EMAIL: gsl5th@btinternet.com

www.5thsuttoneast.co.uk

A LITTLE BIT OF BACKGROUND TO YOUR SCOUT GROUP

The Scout Movement was started by General (later Lord) Robert Baden-Powell in 1907 and since that day it has grown throughout the world, with in excess of 22 million boys and girls now in the movement. In an old book I have, it reads that the aim of the Scout Movement is to develop good citizenship among the boys forming their character. It goes on to read that they should be trained in habits of observation, obedience, self-reliance, inculcating loyalty and thoughtfulness for others, teaching them services useful to the public and handicrafts useful to themselves and promoting their physical, mental and spiritual development. The wording nowadays has changed but the aims are basically the same.

The 5th Sutton Coldfield Scout Group ("the Group") was formed in 1927 by *Frank 'Skip' Hart* when he was in his mid-twenties. In those days of course, Scouting was for boys only. The Group used to meet in a wooden hut which was situated in what now is the Four Oaks Methodist Church car park and new extension. Perhaps it was a sign of the times that the hut was demolished for the motor car. Since 1927, the Group has expanded and now includes Beaver Scouts, Cub Scouts and Scouts. At one time there were Rover Scouts, but these became Venture Scouts in 1968, when Wolf Cubs became Cub Scouts. But in 2002 Venture Scouts became Explorer Scouts and Scout Network, along with a significant change in the age ranges. In 1993 the decision was made that Sutton Coldfield was too big for a district and would be split into two halves, East and West. Therefore, an arbitrary line was drawn which runs up the Lichfield Road and down Streetly Lane. This places us on the East side and hence we became the 5th Sutton Coldfield East Scout Group (172nd Birmingham).

The Group is termed an open sponsored Group, which means we can accept boys and girls from any faith, but Four Oaks Methodist Church has overall responsibility for the well-being of the Group. Irrespective of the religion your child follows, we do expect him / her to attend Church Parades as part of the Promise that they make. These are only held between 4 times a year.

As mentioned the Group is comprised of the three sections, (Beavers, Cubs and Scouts), which are run by men and women who are warranted leaders. These warranted leaders are **VOLUNTEERS** (there is NO salary) and have committed themselves to help run each of the sections and wear the Scout uniform. The warranted leaders are required to complete a series of training courses during the term of their warrant (renewed every 5 years). There are helpers who commit to assist with the day to day running of the sections that don't wear uniform. For any Scouting activity there has to be a warranted leader present for insurance purposes. Names of all leaders, helpers and members of each age, are submitted to the County annually and the Group pays for their registration.

A Scout Group is expensive to run. We have yearly subscriptions (paid in different ways now including internet banking!) However, the subscriptions only cover the day to day running of the Group so we have a Business arm that organizes fundraising events. This Business Arm of the Scout Group is called a Group Executive Committee. Like any other committee, we have a Chairman, Treasurer and Secretary (it is against Scout Association rules for a warranted leader to hold any of these positions). There are also Parent Representatives for each section, whose main task is representing the interests of the other parents of the young people in our Group. We ask for as many parents to assist on this committee as possible, thus cutting down the workload for each committee member. The committee stages events during each year, to raise funds and have FUN and always require the support of the parents. We hope you will volunteer to help on the Group Executive Committee which meets once each school term.

With regard to membership subscriptions, these are decided by the Group Executive and acted upon by the Group Treasurer – no warranted leader handles the membership fees. PLEASE NOTE: It has been decided that subscriptions are only payable once the child has been invested into the Group.

We have mentioned that there are Beavers, Cubs and Scouts in the 5th Sutton Coldfield East Scout Group. Beavers are age between 6 – 8 years, Cubs – 8 – 10½ years and Scouts 10½ - 14 years. The upper age limit is quite flexible, depending on the maturity of the individual and the stage in the year – movement between sections is entirely at the discretion of the leaders in discussion with the young person and his/her parents.



GROUP SCOUT LEADER: TIM SHAW

21 Falmouth Drive, Amington, Tamworth, Staffs, B77 3QJ

TEL: 0845 224 3085 **MOBILE:** 07837 430204

EMAIL: gsl5th@btinternet.com

www.5thsuttoneast.co.uk

We have a policy that should a particular section be full or nearly full, the following order will be applied to each section. Boys and girls from within the Group, i.e. Beavers to Cubs, Cubs to Scouts; siblings will be the next accepted, then Church members, then others who have no connection with the Group or the Church.

Quite recently the Scout Association have changed the programme and challenges within each section. These are as described below:

New Programme

Over recent months, members of the Programme Launch team have been touring the country, visiting 13 venues to explain the details of the new Programme. From Dundee to Exeter, the Programme has been greeted with great enthusiasm.

During any period of change, those who are to be affected are inevitably concerned at the impact it will have on them. People in Scouting have known of the impending changes to the Programme for many years. Many will have contributed thoughts and ideas to the consultations and focus groups. One of the clear messages that came out of our research was that whatever Programme was adopted, it would need to be easy to understand and operate. So, just how different is the new Programme, and will it be as easy to run as its advocates suggest?

A Firm Foundation

At the heart of the Programme lie the six areas of personal development. These are Body, Mind, Faith and Beliefs, Relationships, Community and Surroundings. Leaders help young people to grow and develop in each of these areas through their involvement in the Balanced Programme. The Balanced Programme therefore provides the framework for the weekly meetings and all the other activities that Scouts of any age can take part in.

The new Balanced Programme is all about joining in, or participating. There is much less emphasis on passing tests, and a much greater emphasis on encouraging young people to learn from taking part. This simplifies the number of records that a Leader needs to keep for each individual. The Balanced Programme has three essential components, which are listed below.

The Programme Zones

These are essentially areas of activity. Each Section has its own set of Programme Zones, and they range from five in the Beaver Scouts to eight in the Explorer Scout and Scout Network Programmes.

Each Section includes Zones that cover activities such as Outdoors, Community, Fitness, International, and Beliefs and Attitude. Leaders planning their Section's Programme need to visit each Zone regularly, to ensure that they deliver a Programme that is balanced. Sometimes the meeting night or event will cover activities from just one Zone, while some meetings will draw activities from a variety of Zones. There is no specific list of activities that need to be included in each Zone. Leaders are free to select activities that they feel are appropriate and will appeal to the young people in their Sections.

The Methods

Each Section has a range of Methods that help Leaders to explore each Zone in an imaginative way. While they vary slightly from Section to Section, most Sections include Methods that involve playing games, making things, going on visits, helping others, using the outdoors and following themes. The range of Methods helps to bring as much variety as possible into the Programme.

Underlying Ways of Working

These can best be described as the first impressions of someone walking in to your meeting. They would see lots of activity, and young people having fun. They would see teamwork and commitment, and as the young people get older, evidence of leadership and increased responsibility.



GROUP SCOUT LEADER: TIM SHAW

21 Falmouth Drive, Amington, Tamworth, Staffs, B77 3QJ

TEL: 0845 224 3085 **MOBILE:** 07837 430204

EMAIL: gsl5th@btinternet.com

www.5thsuttoneast.co.uk

Joining In / Participation Awards

For taking part in the Programme, young people receive a special badge, awarded on the anniversary of their first Investiture in a Scouting Section. It is a chance to celebrate what has been achieved through their involvement in the Programme. In the Beaver Scout and Cub Scout Sections this is called the Joining-In Award, while in the Scout Section it is known as the Participation Award. In Explorer Scouting and the Scout Network, the badge is replaced by a certificate, which records the young person's achievements during the year, and looks at the opportunities that exist for the following year.

Challenges

Every Section has a number of Challenge Awards. They grow naturally from the activities in the Programme Zones, and challenge the young people to use the skills they have learned. By undertaking a Challenge individually, or as a member of a group, members can earn a badge in the Colony, Pack or Troop, or a certificate in the Explorer Scout and Scout Network Units. The Challenges in the Explorer Scout and Scout Network Units are compatible with the Duke of Edinburgh's Awards.

It is important not to see the Challenges as taking the place of the present awards, such as the Adventure Crest Award in the Pack or the Pathfinder Award in the Troop. They are, however, the route to the top award in each Section.

The Chief Scout's Award

All the Sections have a top or key award. The Explorer Scout and Scout Network Sections share three between them.

- For Beaver Scouts, the top award is the Chief Scout's Bronze Award. To achieve this, a Beaver Scout will need to earn two Challenges, and complete a personal challenge, which is agreed between the Beaver Scout and the Leader.
- The top award for a Cub Scout is the Chief Scout's Silver Award. The Cub Scout must earn three Challenges, one of which must be the Outdoor Challenge, and complete a personal challenge.
- Scouts need to achieve five Challenges, one of which needs to be the Outdoors Challenge, together with the personal challenge.
- In the Explorer Scout and the Scout Network Sections, the three key awards run in parallel with the three Duke of Edinburgh Awards. They are the Chief Scout's Platinum Award, the Chief Scout's Diamond Award and the Queen's Scout Award.

Activity Badges

Beavers, Cubs, Scouts and Explorer Scouts can all work towards a range of Activity Badges. While these are an optional part of the Programme, they can be used to complement and extend the Balanced Programme. In addition there are four Staged Activity Badges, each with five levels that can be taken by any Scout under 18 years of age at any time. They are IT, Musician, Nights Away and Swimmer. These are the only Staged Activity Badges.

Group Awards

Group Awards provide another way of helping Leaders to run a Balanced Programme. They can only be earned by members from two or more Sections working together. There are three Group Awards - the International Friendship Award, the Environment Award and the Faith Award. There is considerable flexibility in the rules for working for these Awards. The Group Award must include a project that is worked on over a period of three to six months.

Activities / Events

During the year, each section enters numerous District, and sometimes County events. These include District Outings for the Beavers, to the Swimming Gala for the Cubs and Scouts and the Wilkinson Shield Challenge for the Scouts. Over the past years we have done extremely well in these events, even taking 1st place in some cases. However, it really is the taking part that counts in these cases and the young people and adults alike have the opportunity to share these experiences with other like-minded individuals in the name of Scouting.



GROUP SCOUT LEADER: TIM SHAW

21 Falmouth Drive, Amington, Tamworth, Staffs, B77 3QJ

TEL: 0845 224 3085 **MOBILE:** 07837 430204

EMAIL: gsl5th@btinternet.com

www.5thsuttoneast.co.uk

In Summary

Scouting is a PARTNERSHIP between your child, the leaders and yourselves. Please help us to help you son / daughter. It is for the benefit of YOUR child – we are not a childminding service.

If you can help on the Executive Committee, or are interested in helping with a section, or are interested in becoming a warranted leader, then please feel free to speak to me or any of the leaders.

Any questions – feel free to ask someone, we will always DO OUR BEST to help you.

USEFUL INFORMATION

Uniforms:

Uniforms can be purchased from various places, but our recommended shops are as follows, as they are designated Scouting shops and can assist you:

- Clive Mark Schoolwear, Birmingham Road, Wylde Green
- Online at www.scoutshops.com

Neckerchief:

The young people wear a Sky blue neckerchief along with our Group Badge sewn on the back. This identifies them as members of the 5th Sutton Coldfield East Scout Group. This necker will be provided for you when your son/daughter is invested into the Group.

Badges

These will be presented to your child by the relevant Leader. The cost of badges is included in the membership subscriptions.

NB. PLEASE DO NOT ALLOW FINANCIAL SITUATIONS TO PREVENT YOUR CHILD FROM PARTICIPATING. ARRANGEMENTS CAN BE MADE AND WILL BE TREATED WITH COMPLETE DISCRETION. WE WOULD RATHER THE YOUNGSTERS TAKE PART THAN MISS OUT!

USEFUL TELEPHONE NUMBERS

Warranted Leaders:

Group Scout Leader -	Tim Shaw	-	01827 313747/ 07837 430204
Beaver Scout Leader -	Michelle Carrington	-	0121 353 5360 / 07779 255656
Cub Scout Leader -	Stephen Williams	-	0121 308 4272 / 07761 677697
Scout Leader -	Joanna Garvey	-	0121 241 7464 / 07912 296529

Executive Committee:

Chairman -	Julian Davies	-	0121 352 1619
Treasurer -	Clive Hawtin	-	0121 308 2032
Secretary -	VACANT	-	

Parent Representative -	Tracey Jones
Parent Representative -	Phil Harris
	Liz Kirsten
Parent Representative -	Clare Taylor



GROUP SCOUT LEADER: TIM SHAW

21 Falmouth Drive, Amington, Tamworth, Staffs, B77 3QJ

TEL: 0845 224 3085 **MOBILE:** 07837 430204

EMAIL: gsl5th@btinternet.com

www.5thsuttoneast.co.uk

PARENTS' QUESTIONNAIRE

ABOUT THE PARENTS' QUESTIONNAIRE:

As you will now be aware, the Scout Group is run entirely by VOLUNTEERS, be they the warranted leaders and helpers, who organise and run the training, or be they the members of the Group Executive Committee, which is comprised mainly of parents and other supporters.

There are other parents, guardians and supporters who help to organise the fundraising events, help with maintenance of the equipment, etc. There are so many ways in which the Scout Group can be helped to serve its members by offering the widest range of activities from 6 years all the way through to 14 years.

It would be a great help if you would complete the Parents Questionnaire and provide details of any equipment or any other assistance that you are able to offer, even if this is on a very occasional basis. An example of the sort of information we are looking for is given below, but this is by no means exhaustive!

- CAN YOU HELP WITH TRANSPORT?
- DO YOU HAVE A VEHICLE WITH A TOW-HITCH?
- DO YOU HAVE ACCESS TO A VAN / LORRY OR MINIBUS?
- COULD YOU STORE CANOES?
- DO YOU HAVE CARPENTRY / EQUIPMENT MAINTENANCE SKILLS?
- WHAT ARE YOUR HOBBIES – COULD THEY BE OF INTEREST TO THE GROUP? (TALKS, DEMONSTRATIONS).
- SIMILARLY, COULD YOUR JOB BE INTERESTING TO THE YOUNGSTERS?
- DO YOU HAVE ACCESS TO ROPES, PULLEYS, RAFTING BARRELS, CAMP EQUIPMENT, ETC?
- DO YOU HAVE ACCESS TO A PHOTOCOPIER, LAMINATER, ETC?



GROUP SCOUT LEADER: TIM SHAW

21 Falmouth Drive, Amington, Tamworth, Staffs, B77 3QJ

TEL: 0845 224 3085 **MOBILE:** 07837 430204

EMAIL: gsl5th@btinternet.com

www.5thsuttoneast.co.uk

PARENTS' QUESTIONNAIRE

(To be completed by the parents/guardians)

Parents' names			
Address			
		Postcode	
Telephone Number (Day)			
(Evening)			
(Mobile)			
E-Mail address			
Parents' occupations			
Driver?			

DO YOU HAVE ACCESS TO SOMETHING WHICH COULD BENEFIT THE SCOUT GROUP AND THAT YOU ARE HAPPY TO LET US USE? (eg. Photocopier, fax, transit van, trailer, etc. – PLEASE GIVE DETAILS BELOW) :

- ♦ I WOULD LIKE TO KNOW MORE ABOUT BECOMING A HELPER / WARRANTED LEADER *
- ♦ I WOULD LIKE TO KNOW MORE ABOUT THE GROUP EXECUTIVE COMMITTEE AND WHAT IT DOES
- ♦ I CAN HELP OUT WITH THE ORGANISATION OF CAMPS, ETC. (eg. Transport, making and breaking camp, etc.)
- ♦ I CAN HELP OUT WITH FUNDRAISING EVENTS (Tick Here)

COMMENTS / SUGGESTIONS :



GROUP SCOUT LEADER: TIM SHAW

21 Falmouth Drive, Amington, Tamworth, Staffs, B77 3QJ

TEL: 0845 224 3085 MOBILE: 07837 430204

EMAIL: gsl5th@btinternet.com

www.5thsuttoneast.co.uk

NEW MEMBERS DETAILS

(To be completed for the youngsters)

Strictly Confidential

GENERAL INFORMATION:			
Full Names			
Address			
			Postcode
Telephone No'			
E-Mail			
Date of Birth			
Previous Scouting (i.e. Beavers, Cub including dates & where)			
Present School			
Religion			
Ability to swim 25m confidently & treadwater			
Dietary Requirements			
MEDICAL INFORMATION:			
National Health Number			
Doctor's Address			
			Postcode
Doctor's phone number			
Special Needs			
Medical conditions			
Anything else leaders need to be aware of?			

Emergency Contact Number :	
----------------------------	--



GROUP SCOUT LEADER: TIM SHAW

21 Falmouth Drive, Amington, Tamworth, Staffs, B77 3QJ

TEL: 0845 224 3085 **MOBILE:** 07837 430204

EMAIL: gsl5th@btinternet.com

www.5thsuttoneast.co.uk

As a membership organisation information is stored on a database on a laptop computer. As we are holding information classed as **PERSONAL SENSITIVE DATA** we need your express permission to keep it. Therefore please complete the section below.

Data Protection Act – I give my express consent to the 5th Sutton Coldfield East Scout Group keeping information regarded as **PERSONAL SENSITIVE DATA** (* - Delete as appropriate)

Signature of either parent :